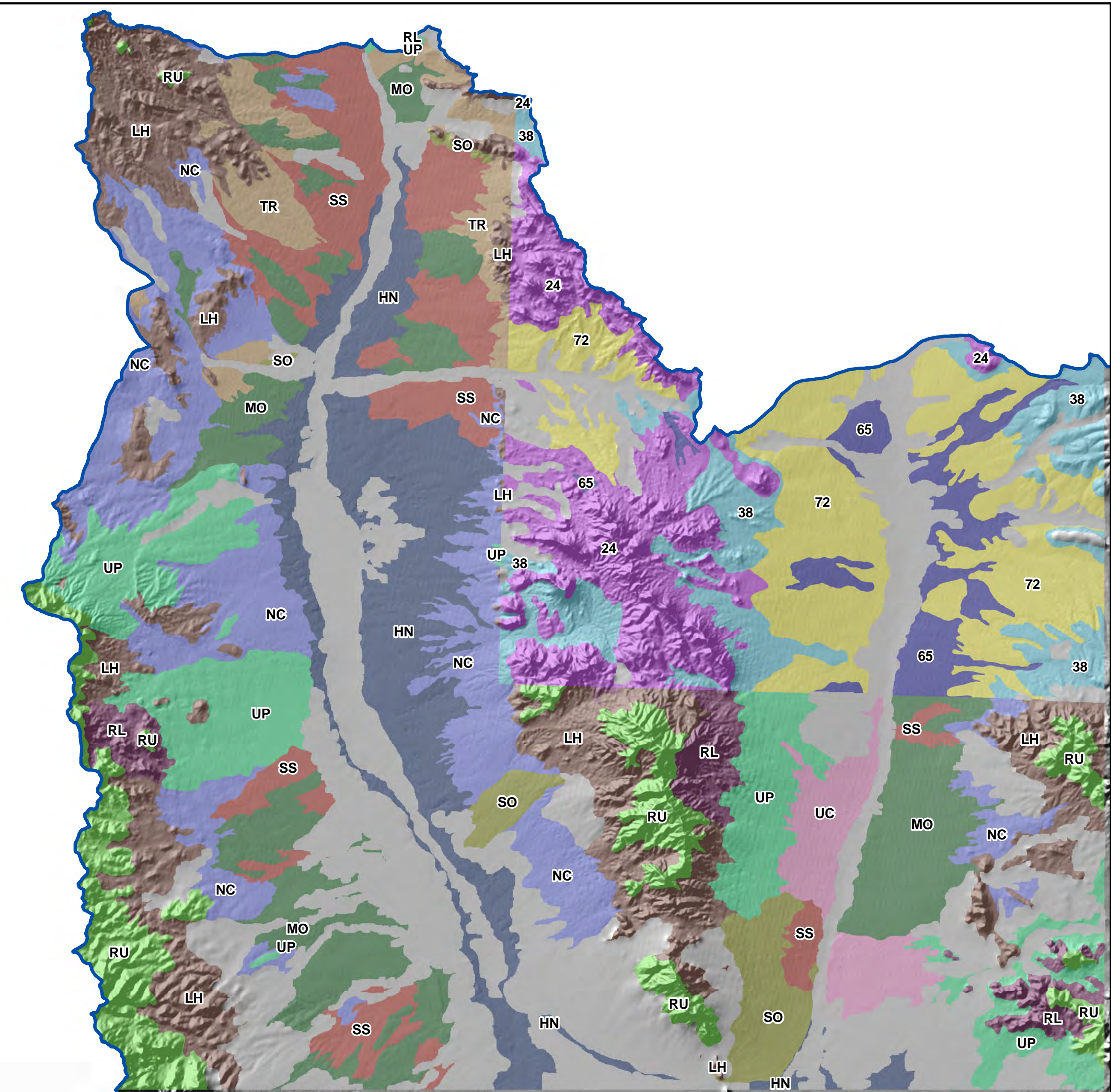
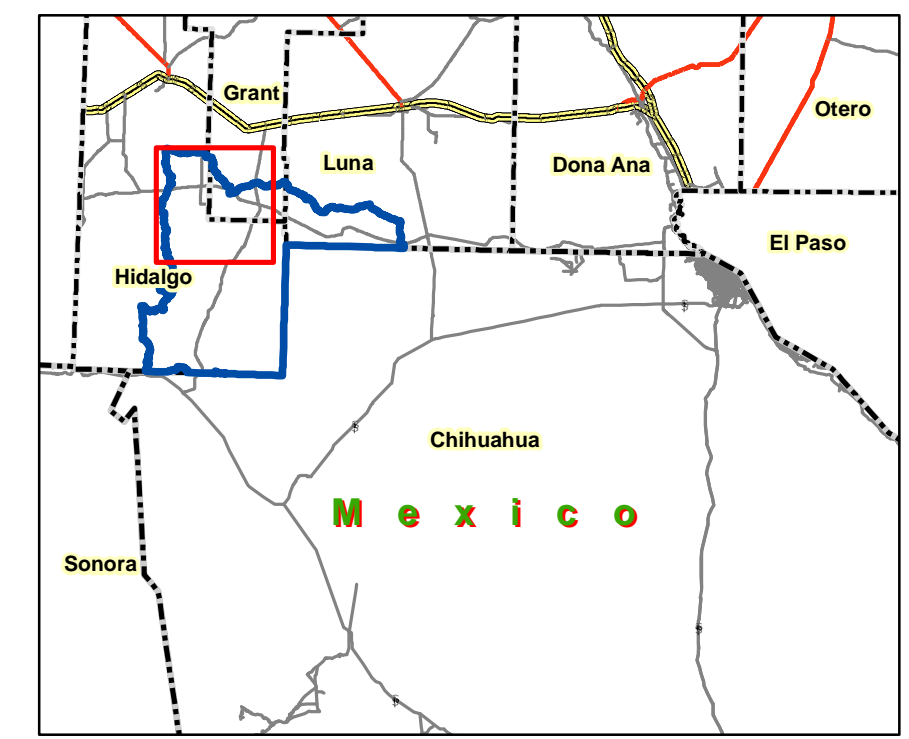


Playas Lake Watershed Northern Top 15 soils



- 24 Harvey-Darvey association, gently sloping
- HN Hondale soils
- LH Lehmans extremely rocky loam, 10 to 25 percent slopes
- MO Mohave sandy clay loam, 0 to 5 percent slopes
- 38 Monjeau-Docdee complex, 8 to 15 percent slopes
- NC Nickel gravelly sandy loam, 3 to 9 percent slopes
- 65 Purcella-Riverwash association, gently sloping
- 72 Reventon-Sampson association, gently sloping
- RL Rock land
- RU Rough broken land and Rock land
- SO Sonoita-Yturbide complex
- SS Stellar sandy clay loam
- TR Tres Hermanos gravelly clay loam
- UC Ubar soils
- UP Upton gravelly loam, 1 to 9 percent slopes

MUSYM	Map Unit Name	Acres
LH	Lehmans extremely rocky loam, 10 to 25 percent slopes	36,323
NC	Nickel gravelly sandy loam, 3 to 9 percent slopes	33,843
HN	Hondale soils	28,629
72	Reventon-Sampson association, gently sloping	27,673
MO	Mohave sandy clay loam, 0 to 5 percent slopes	27,602
UP	Upton gravelly loam, 1 to 9 percent slopes	24,608
24	Harvey-Darvey association, gently sloping	22,482
SS	Stellar sandy clay loam	19,680
RU	Rough broken land and Rock land	16,771
38	Monjeau-Docdee complex, 8 to 15 percent slopes	15,158
65	Purcella-Riverwash association, gently sloping	8,435
TR	Tres Hermanos gravelly clay loam	7,835
UC	Ubar soils	7,042
SO	Sonoita-Yturbide complex	6,574
RL	Rock land	6,548



Scale 1:130,000