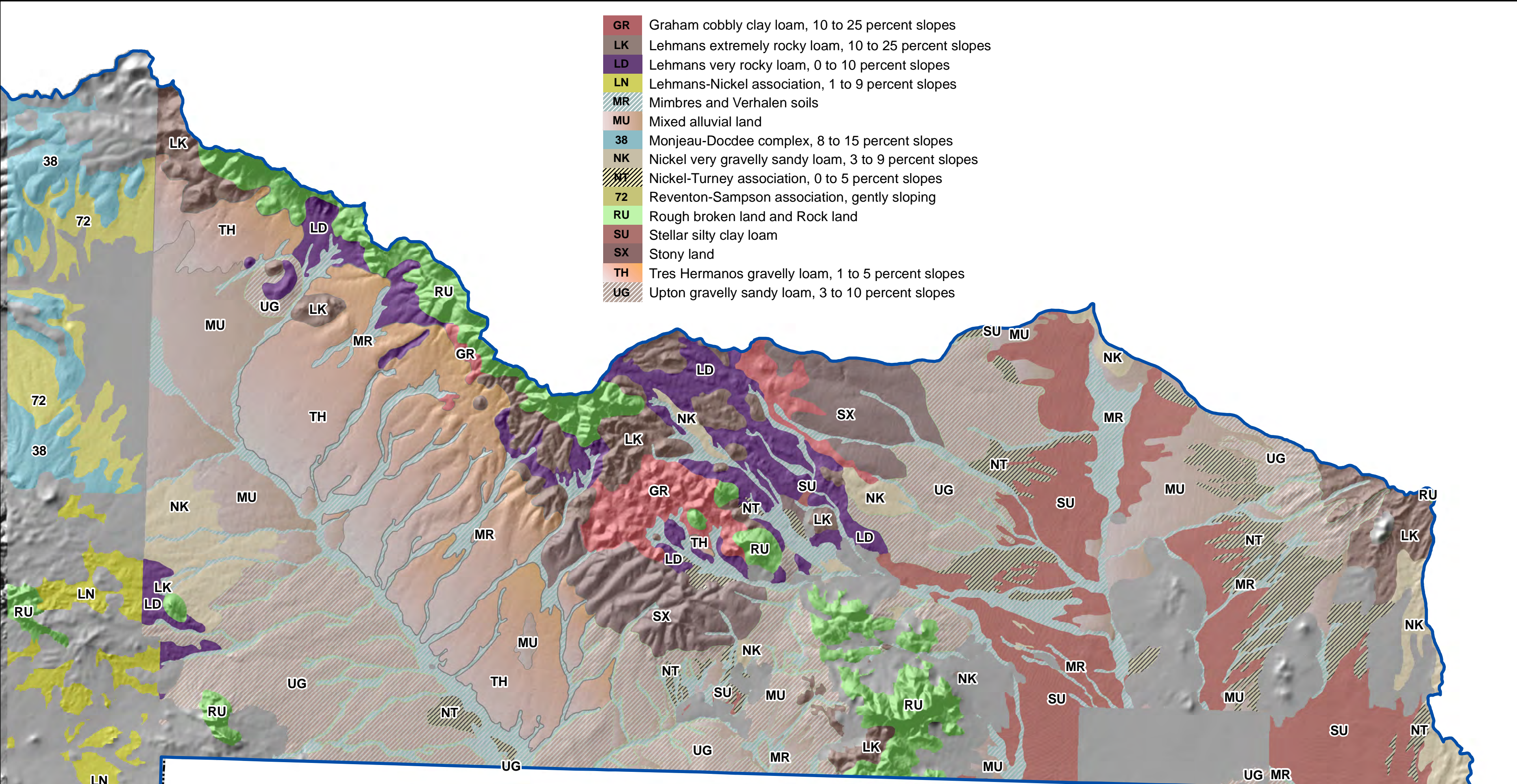


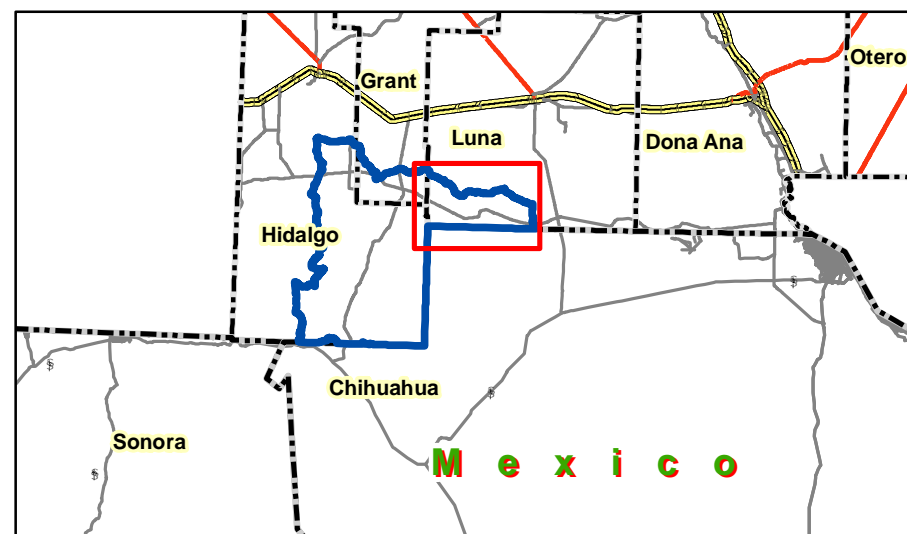
Playas Lake Watershed Northernneastern Top 15 soils

- GR** Graham cobbly clay loam, 10 to 25 percent slopes
- LK** Lehmans extremely rocky loam, 10 to 25 percent slopes
- LD** Lehmans very rocky loam, 0 to 10 percent slopes
- LN** Lehmans-Nickel association, 1 to 9 percent slopes
- MR** Mimbres and Verhalen soils
- MU** Mixed alluvial land
- 38** Monjeau-Docdee complex, 8 to 15 percent slopes
- NK** Nickel very gravelly sandy loam, 3 to 9 percent slopes
- NT** Nickel-Turney association, 0 to 5 percent slopes
- 72** Reventon-Sampson association, gently sloping
- RU** Rough broken land and Rock land
- SU** Stellar silty clay loam
- SX** Stony land
- TH** Tres Hermanos gravelly loam, 1 to 5 percent slopes
- UG** Upton gravelly sandy loam, 3 to 10 percent slopes



Mexico

Scale: 1:105,000



MUSYM	Map Unit Name	Acres
UG	Upton gravelly sandy loam, 3 to 10 percent slopes	26,368
TH	Tres Hermanos gravelly loam, 1 to 5 percent slopes	23,366
MR	Mimbres and Verhalen soils	18,059
SU	Stellar silty clay loam	17,430
MU	Mixed alluvial land	13,653
RU	Rough broken land and Rock land	12,676
LK	Lehmans extremely rocky loam, 10 to 25 percent slopes	9,293
SX	Stony land	7,819
LD	Lehmans very rocky loam, 0 to 10 percent slopes	7,777
NT	Nickel-Turney association, 0 to 5 percent slopes	7,558
NK	Nickel very gravelly sandy loam, 3 to 9 percent slopes	6,039
38	Monjeau-Docdee complex, 8 to 15 percent slopes	5,666
72	Reventon-Sampson association, gently sloping	4,842
LN	Lehmans-Nickel association, 1 to 9 percent slopes	4,237
GR	Graham cobbly clay loam, 10 to 25 percent slopes	3,945